

Featured Sessions

ADVOCACY SESSION HIGHLIGHT

Advocacy in Action: Updates from Your MMA/MOA Legislative Committee, & AOA Public Policy Team

Friday, February 7th 11:00AM–12:00PM
(Live from the Jordan Hotel @ Sunday River & Livestreamed)



Amanda Mahan
Executive Director
Maine Osteopathic Association



Sean Neal
Vice President of Advocacy and Political Affairs
American Osteopathic Association



Anne Sedlack
MMA Director of Advocacy
Maine Medical Association

AI PANEL HIGHLIGHT

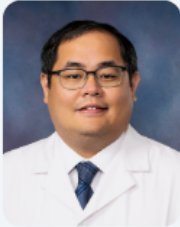
AI in Medicine 101: Clinical Use Cases & Legal/Ethical Considerations for Physicians

Saturday, February 8th, 8:30AM–10:30AM
(Live from the Jordan Hotel @ Sunday River & Livestreamed)

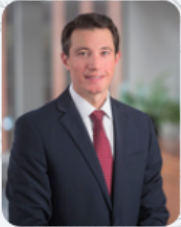
Objectives

- Provide a broad overview of current uses of AI in medicine.
- Describe how Artificial Intelligence works, specifically Generative AI.
- Describe Generative AI safety in the use of healthcare delivery.
- Describe some ways how AI can help with Clinical Decision Support
- Understand the potential legal implications of utilizing AI in the practice of medicine.
- Evaluate the ethical considerations that must be considered in the implementation of this technology in medicine

Presented By:



Frederick Chang, DO



Joshua D. Hadiaris, Esq



R. Scott Hanson, MD

CME Accreditation Information

The MOA is accredited by the American Osteopathic Association (AOA) to provide osteopathic continuing medical education for physicians. The MOA designates this program for a maximum of 21.5 AOA Category 1-A credits and will report CME and specialty credits commensurate with the extent of the physician’s participation in this activity. Other CME types are anticipated and applications will be filed. Final CME determinations & details will be available in the event virtual platform.

Welcome to the MOA's Midwinter Symposium 2025

Warm greetings and hello to all - Welcome to our 2025 Midwinter Symposium! Whether you are joining in person or virtually, we are thankful to have you here.

We are excited to be hosting you for the first time from Sunday River in Newry Maine for Ski CME! We have made sure to carve out some time for those in person to enjoy and take advantage of the winter recreation that Sunday River has to offer, in and around the resort, while also lining up CME sessions to share with you both in person and online.

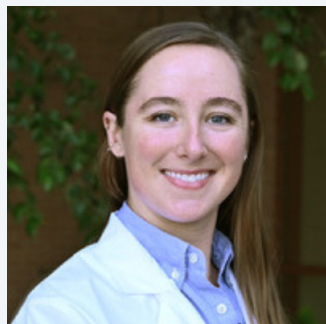
Some sessions you won't want to miss include: a CDC update on breast and cervical health, how to triage and manage psychiatric emergencies in the outpatient setting, and advocacy in action, as well as a session on how to navigate responding to Ski emergencies. We are excited to offer a session on AI in medicine, which will include an overview on AI, and will touch upon clinical cases and ethical and legal considerations that can be applied to your everyday practice, with a panel discussion included to address any of your questions. Make sure to attend our in-person lectures, with hands on labs, on sinusitis, sciatica, and concussions, to learn some techniques to help your patients who are experiencing these common things!

Please join us for our MOA Welcome Reception Friday February 7th at 6:00 where we will have the opportunity to connect, and for our MOA Business Meeting on Saturday February 8 at 10:45, where we will have the opportunity to discuss updates with the MOA.

UNECOM and the MOA will be hosting our Après Welcome Session at the Shipyard Brewhaus Saturday night from 6:30–8:00! Join the MOA and UNE COM community for brews & bites, with live music to follow at the venue from the Shipyard Winter Concert Series. All attendees and guests are welcome, and the resort shuttle can be used for transportation to and from hotels on the Sunday River Resort.

Be sure to submit your CME attestation forms on the online platform, as well as submitting your feedback for the speakers, and for the program overall!

A warm thank you to the Program Committee, and to Amanda Mahan, for your time and energy spent helping to pull this conference together - you are sincerely appreciated. Thank you to our speakers for sharing your thoughts, time, and knowledge with us. We are so grateful. Thank you to our sponsors, who help make this event a reality. Thank you to our tech team for helping us to make hybrid conferences possible. And thank you to those at the Sunday River Resort to help make this conference run smoothly behind the scenes.



We hope that you enjoy our program!

With warm wishes and osteopathic blessings,

Your Program Committee Chair
Breanna Glynn, DO

Save the Date for the MOA 114th Annual Convention!

Samoset Resort | Rockport, ME | June 13-15th, 2025

This family-friendly weekend of CME by the sea is not to be missed! Special events include our Annual MOA Awards ceremony, MOA Kids Camp, Presidential Inauguration Celebration, and much more. Room block will open soon — check the MOA website at www.mainedo.org for more details.

Symposium Agenda

Friday, February 7th – In Person & Livestream Content – 7.25 CME Credits

Date/Time	Description	Presenter	Room	CME
6:30-7:15AM	Registration Desk Opens Continental Breakfast/Exhibits		Balsam/ Spruce	
7:15-8:00AM	Updates from the Maine CDC Breast and Cervical Health Program	Angie Nile	Birches I & II	0.75
8:00-9:00AM	MaineHealth Social Determinants of Health Screening: Data to Action	Dora Anne Mills, MD, MPH, FAAP	Birches I & II	1
9:00-9:30AM	Exhibit Hall Break		Balsam/ Spruce	
9:00AM	MOA Past Presidents' Council Meeting		Juniper	
9:30-11:00AM	Sinusitis: Quick Office Treatments Lecture & Lab Objectives:	Mary Yee, DO	Birches I & II	1.5
11:00AM-12:00PM	Advocacy in Action: Updates from your MMA/ MOA legislative committee, & AOA Public Policy Team	Amanda Mahan, MA – MOA Executive Director Anne Sedlack, Esq., M.S.W. – MMA Director of Advocacy Sean Neal, AOA Vice President, Advocacy & Political Affairs	Birches I & II	1
12:00-12:45PM	Non-CME Session: Beyond Glycemic Control Lunch will be provided	Presented by Nisha Nathan, Scientific Director for NovoNordisk	Juniper	Non- CME
12:45-2:30PM	Ski Break			
2:30-3:30PM	Diagnosing Sciatica	Ron Mosiello, DO	Birches I & II	1
3:30-4:30PM	Triaging Psychiatric Emergencies in the Outpatient Setting	Kristen Mazoki, DO	Birches I & II	1
4:30-5:00PM	Exhibit Hall Break		Balsam/ Spruce	
5:00-6:00PM	Physicians on the Slopes: Responding to Ski Emergencies	Cindy Asbjornsen, DO, FAVLS, RPhS, DABVLM	Birches I & II	1
6:00-6:45PM	Après Welcome Reception, hosted by MOA in the Exhibit Hall		Balsam/ Spruce	

Saturday, February 8th – In Person & Livestream Content – 7.25 CME Credits

Date/Time	Description	Presenter	Room	CME
6:30-7:15AM	Registration/Continental Breakfast/Exhibits		Balsam/ Spruce	
7:15-8:00AM	2022 CDC Opioid Prescribing Guideline	Diane Zavotsky, MD	Birches I & II	0.75
8:00-8:30AM	Exhibit Hall Break		Balsam/ Spruce	
8:30-10:30AM	AI in Medicine: 101 Overview, Clinical Use Cases, Ethical/Legal Considerations & Expert Panel Discussion	Frederick Chang, DO Joshua D. Hاديaris, Esq. - Norman, Hanson & DeTroy R. Scott Hanson, MD - MMA President	Birches I & II	2
10:30-10:45AM	Exhibit Hall Break		Balsam/ Spruce	
10:45AM-12:00PM	MOA Business Meeting	Led by Jodie Hermann, DO, MOA President	Birches I & II	1
12:00-12:45PM	Non-CME Session: GLP-1 Clinical Trials Lunch will be provided	Presented by NovoNordisk	Juniper	
12:30-2:00PM	Ski Break			
2:00-3:30PM	Concussion Management: Lecture & Lab	K. Emily Redding, DO	Birches I & II	1.5
3:30-4:00PM	Exhibit Hall Break		Balsam/ Spruce	
4:00-5:00PM	DXA Body Composition Analysis, VO2 Max and RMR Testing to Augment Behavioral Change	Amanda Cardella, DO	Birches I & II	1
5:00-6:00PM	Age Positive Medical Care	Kathy Vezina, RN, JD & Rebecca Spear, DO FACP	Birches I & II	1
6:30-8:00PM	UNE COM Après Reception <i>Join the UNE COM community for brews & bites. Attendees and guests welcome, resort shuttle can be used for transportation & live music will follow at the venue!</i>		Shipyard Brewhaus	

Sunday, February 9th – In Person & Livestream Content – 3 CME Credits

Date/Time	Description	Presenter	Room	CME
6:30-7:00AM	Continental Breakfast			
7:00-8:00AM	At Home Initiation of Buprenorphine In The Office Setting	Paul Vinsel, DO	Birches I & II	1
8:00-9:00AM	Understanding Struggling Learners	Tristan Reynolds, DO	Birches I & II	1
9:00-10:00AM	Medical and Surgical Management of Chronic Rhinosinusitis	Brian Lee, DO	Birches I & II	1
10:00-10:15AM	Wrap Up			

On Demand CME Sessions

Available during live Symposium and for 30 days following

4 Available CME Credits

Update from ORS (Overdose Response Strategy) Partnership	James Gioia, Drug Intelligence Officer, New England HIDTA / ME Shasta Minery, CDC Foundation Overdose Response Strategy	1
HIV & SUD in Maine: How One County's Recent HIV Cluster Highlights Important Links Between SUD & HIV	Isaac Benowitz, MD Courtney Pladsen, DNP, FNP-BC	1
Multidisciplinary approach to Treating Obesity with Use of Anti-Obesity Medications	Valerie O'Hara, DO	1
Dangers of Waiving Patient Balances Such as Coinsurance, Deductibles, Copayments	Tom Force, Esq	1

Join Us for the Après Welcome Reception

Hosted by MOA | Exhibit Hall | Friday, February 7th at 6:00PM

join us for beer/wine and quick bites before dinner on your own!

Join Us After the Sessions!



UNE COM Après Reception

Shipyard Brewhaus
Saturday, February 8th, 6:30–8:00pm



Join the UNE COM community for brews & bites. Attendees and guests welcome, resort shuttle can be used for transportation & stick around at the venue for live music from Tickle as part of the Shipyard Winter Concert Series!

shipyardbrewhaussundayriver.com

The event is generously sponsored by University of New England College of Osteopathic Medicine
MOA Symposium attendees/guests and MOA members & UNE COM alumni are welcome to attend!

OMM Treatment Service

Provided by Volunteers from MaineDartmouth & UNE COM OMM Fellows in the Maple Room

Friday, February 7th (2PM-6PM)

Saturday, Feb 8th (7AM-12PM)

Saturday, Feb 8th PM (2PM-6PM)

Sign up at the MOA registration desk!

Research Forum

Thank you to our presenters, judges and UNE COM Research staff team for all of their efforts to share research for this year's MOA Virtual Research Forum. Scan the QR code to check out this year's research submissions on Youtube:



Accessing the Virtual Platform – CME and Session Info

For easy access to the Virtual Platform, scan the QR code. Here you can see session objectives, faculty bios, full cme accreditation details, and more.

To claim your CME: Please log into the event platform and complete your evaluations. All evaluations and CME attestation should be completed online.



MOEF 50/50 Raffle



We will be selling 50/50 raffle tickets to benefit the Maine Osteopathic Educational Foundation. Purchase your tickets at the registration table or from volunteers that will be circulating. The winning ticket will be drawn on **Sunday morning at the conclusion of programming.**

Thank You to Our Sponsors!

Silver Sponsor



Bronze Sponsor



Reception Sponsor



Session Sponsor



Saturday Coffee Sponsor

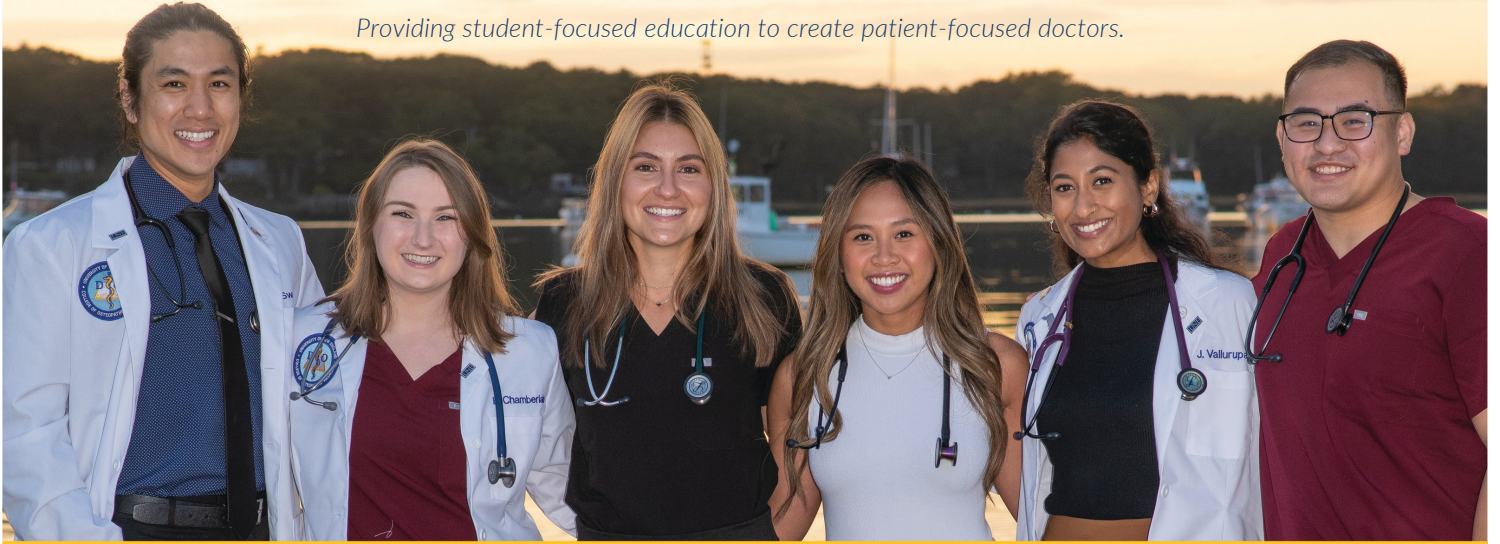


Thank You to Our Exhibitors!

- | | |
|---|--|
| Medical Mutual | Inspire Medical Systems Inc |
| UNE COM | Sam Wearable Ultrasound Devices |
| GSK Vaccines (GlaxoSmithKline) | Co-Occurring Collaborative Serving Maine |
| Lundbeck | Maine CDC Breast and Cervical Health Program |
| Insmed Incorporated | NovoNordisk - Commercial |
| Back in Motion - Maine Physical Therapy | NovoNordisk - Obesity Medical Affairs |
| Merck & Co., Inc. | |

UNIVERSITY OF NEW ENGLAND COLLEGE OF OSTEOPATHIC MEDICINE
**NEW ENGLAND'S ONLY
OSTEOPATHIC MEDICAL SCHOOL**

Providing student-focused education to create patient-focused doctors.



UNE UNIVERSITY OF
NEW ENGLAND

INNOVATION FOR A HEALTHIER PLANET

Partners in patient safety & medical liability protection



M
Medical Mutual
INSURANCE COMPANY OF MAINE